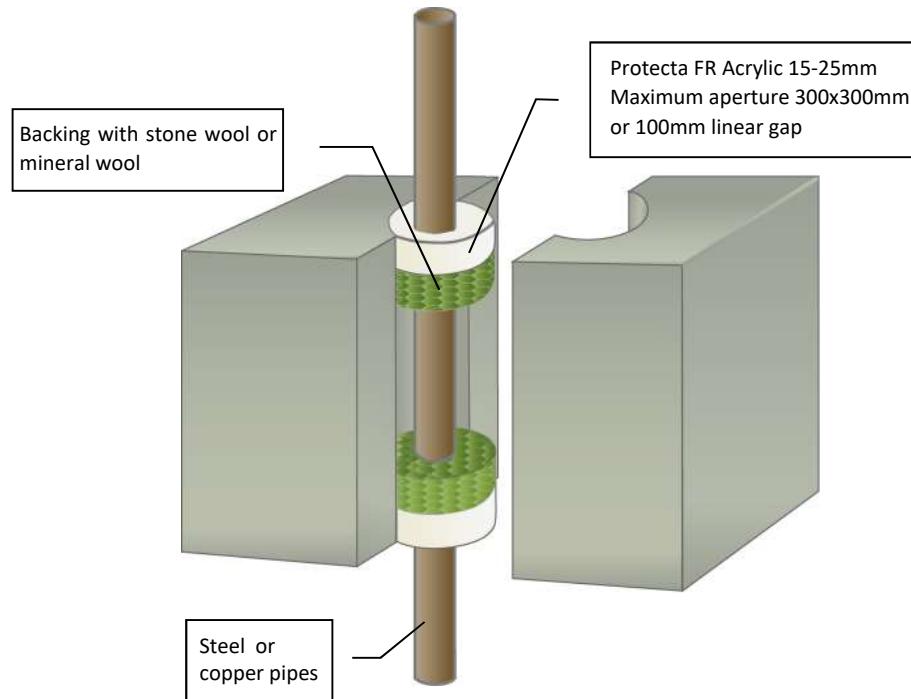


Protecta FR Acrylic - 100mm Concrete Floor Steel or Copper Bare Pipe 300x300mm Steel Bare Pipe in 100mm Linear Gap

Installation Instructions

1. Before installing Protecta® FR Acrylic ensure that the surface of all service penetrations and surrounding construction is free from all loose contaminants, dust and grease.
2. Where Protecta® FR Acrylic is to be installed against surfaces that cannot tolerate direct contact; appropriate surface preparation should be made (contact Polyseam for guidance in these cases). For paints sensitive to sealing compounds, priming with a PVA primer is recommended.
3. As Protecta® FR Acrylic is water based, in cases where corrosion protection is a problem; some metals may require a barrier between the sealant and the metal surface prior to this installation.
4. When installing any backing material, cut this slightly oversize and insert into the gap ensuring a tight friction fit. Ensure correct depth is achieved.
5. Fill the gap or joint with Protecta® FR Acrylic to the required depth.
6. Apply the sealant generously to prevent air bubbles. Finish the bead with a moist spatula, pallet knife or brush.
7. Protecta® FR Acrylic can be over-painted with most emulsion or alkyd (gloss) paints.



System/FPA Register ID# FC300

Products	Protecta FR Acrylic Stone wool
Application	Fire stopping of steel or copper pipes in rigid floors
Construction	Minimum floor thickness of 100 mm and comprise aerated concrete or concrete with a minimum density of 650kg/m ³ .

Fire & Sound classification:

Steel pipes up to 16mm diam with 25mm Acrylic, 25mm stone wool 140kg/m³ FRR -/240/240

Steel pipes up to 63mm diam with 15mm Acrylic, 25mm stone wool 35kg/m³ FRR -/240/30

Steel pipes up to 219mm diam with 15mm Acrylic, 20mm stone wool 40kg/m³ FRR -/240/-

Copper or steel pipes up to 54mm, 25mm Acrylic, 25mm stone wool 140kg/m³ FRR -/120/15

Linear Gap of 100mm:

Steel pipes up to 16mm diam with 25mm Acrylic and 25mm stone wool 35kg/m³ FRR -/120/120

Steel pipes up to 80mm diam with 15mm Acrylic and 20mm stone wool 40kg/m³ FRR -/240/-

Floor thickness may be reduced to 100mm with FRR of system reduced to FRR of the floor.

ZERO smoke leakage up to 200Pa

Sound reduction (seal only) STC 62

Sheet size: A4	Drawn date & no: 24/5/21
Scale: NTS	Drawn by: K.B

As a part of our policy of on-going product development and testing, we reserve the right to modify, alter or change product specifications without giving notice. All information contained in this document is given in good faith and is provided for guidance only. Any drawings provided are for illustrative purposes only. As Polyseam has no control over the methods or competence of installation and of prevailing site conditions, no warranties, expressed or implied, is intended to be given as to the actual performance of the product mentioned or referred to herein and no liability whatsoever will be accepted for any loss, damage or injury arising from the use of the information given.